

LEADING REGENERATION

**Geistlich**  
Biomaterials

Your magical hands –

# Our Geistlich Bio-Oss® 1.0 g



1.0 g, small granules

1.0 g, large granules



# 1.0 g of Geistlich Bio-Oss® for more treatment flexibility and same clinical long-term success<sup>1-5</sup>

## Quantities available\*:

Small granules (0.25–1 mm)

0.25 g ≈ 0.5 cm<sup>3</sup>

0.5 g ≈ 1.0 cm<sup>3</sup>

**1.0 g ≈ 2.0 cm<sup>3</sup>**

2.0 g ≈ 4.0 cm<sup>3</sup>

Large granules (1–2 mm)

0.5 g ≈ 1.5 cm<sup>3</sup>

**1.0 g ≈ 3.0 cm<sup>3</sup>**

2.0 g ≈ 6.0 cm<sup>3</sup>

## Sizes available:

13 × 25 mm

25 × 25 mm

30 × 40 mm



## Clinical long-term success with Geistlich Bio-Oss® and Geistlich Bio-Gide®<sup>1-5</sup>

### Reliable:

Implant survival rate of 91.9% with Geistlich Bio-Oss® and Geistlich Bio-Gide® after 12–14 years<sup>1</sup>

### Predictable:

Well preserved facial bone wall after 5–9 years with Geistlich Bio-Oss® and Geistlich Bio-Gide®<sup>2,5</sup>

Major bone Augmentation

Sinus floor elevation

**Geistlich Bio-Oss®**  
0.25–1 mm  
**1.0 g ≈ 2.0 cm<sup>3</sup>**



**Geistlich Bio-Oss®**  
1–2 mm  
**1.0 g ≈ 3.0 cm<sup>3</sup>**



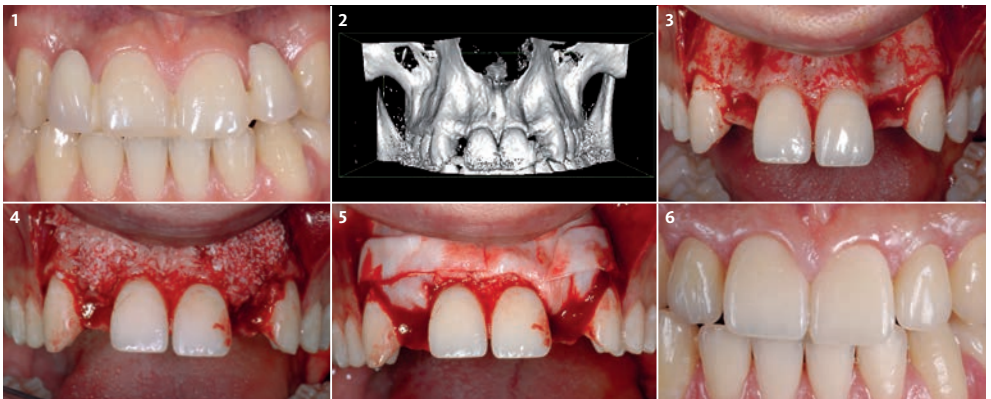
# A powerful combination extended



“**Geistlich Bio-Oss® 1.0 g** meets the need for an extended product range! Additional flexibility in GBR therapy for excellent long-term outcomes and stable aesthetic results!”

Prof. Matteo Chiapasco | Milan (Italy)

GBR augmentation, Prof. M. Chiapasco



**1** Initial preoperative situation of regions 12 and 22. Resorbed buccal bone due to agenesis of the two lateral incisors.

**2** Preoperative CBCT scan showing the extension of the bone defect.

**3** Intraoperative situation of the resorbed buccal bone in regions 12 and 22.

**4** Augmentation with a mixture of autologous bone particles and Geistlich Bio-Oss® bovine bone material.

**5** Application of a Geistlich Bio-Gide® collagen membrane in two layers.

**6** An excellent aesthetic outcome at one year follow-up after prosthetic loading.



More details about our  
distribution partners:  
[www.geistlich-biomaterials.com](http://www.geistlich-biomaterials.com)

#### Manufacturer

Geistlich Pharma AG  
Business Unit Biomaterials  
Bahnhofstrasse 40  
6110 Wolhusen, Switzerland  
Phone + 41 41 492 55 55  
Fax + 41 41 492 56 39  
[www.geistlich-biomaterials.com](http://www.geistlich-biomaterials.com)



- > **More than 1,100**  
pre-clinical and clinical studies<sup>9</sup>
- > **More than 15 million**  
applications of Geistlich Bio-Oss<sup>®10</sup>
- > **More than 6.5 million**  
applications of Geistlich Bio-Gide<sup>®10</sup>
- > **Every 18 seconds**  
one Geistlich biomaterial is used<sup>10</sup>
- > **No. 1 worldwide leader**  
in regenerative dentistry for  
almost 30 years<sup>6,7</sup>

#### References

- 1 Jung RE et al., Clin Oral Implants Res. 2013 Oct;24(10):1065-73 (Clinical study).
- 2 Jensen SS et al., J Periodontol. 2014 Nov;85(11):1549-56 (Clinical study).
- 3 Mordenfeld A et al., Clin Oral Implants Res. 2010 Sep;21(9):961-70 (Clinical study).
- 4 Degidi M et al., Clin Implant Dent Relat Res. 2009 Sep;11(3):178-82 (Clinical study).
- 5 Buser D et al., J Dent Res. 2013 Dec;92(12 Suppl):1765-82S (Clinical study).
- 6 Millennium Research Group, Dental Biomaterials North America, 2018 (Market research).
- 7 Millennium Research Group, Dental Biomaterials Europe, 2016 (Market research).
- 8 ISO 13485 certificate, design & development.
- 9 NCBI Pubmed, October 2019, Search term: Bio-Oss, PubMed Filter "Species: Humans" (751 hits) or "Other animals" (597 hits) (Market research).
- 10 Based on the number of units currently sold. Data on file (Wolhusen, Switzerland).

\*Product availability may vary from country to country.