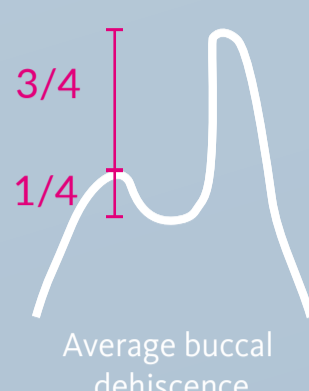


A randomized, controlled, multi-center clinical trial of post-extraction alveolar ridge preservation.

Scheyer et al. 2016

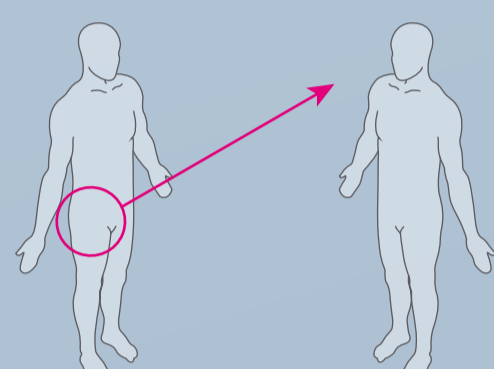
subjects with extraction sockets were enrolled

40



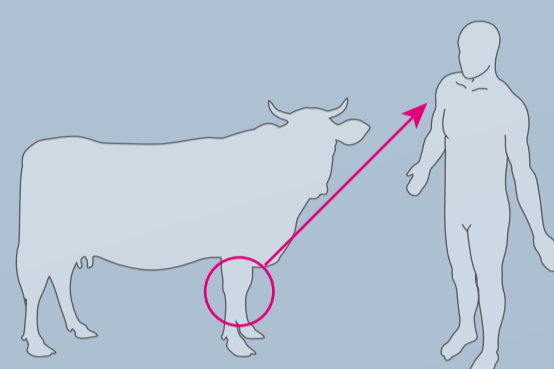
sockets exhibited substantial buccal dehiscences

TREATMENT OF EXTRACTION SOCKETS: RIDGE PRESERVATION



ALLOGRAFT¹
+ cross-linked collagen membrane²

VS



XENOGENEIC
Geistlich Bio-Oss[®] Collagen³
+ Geistlich Bio-Gide^{®4}

BONE FORMATION

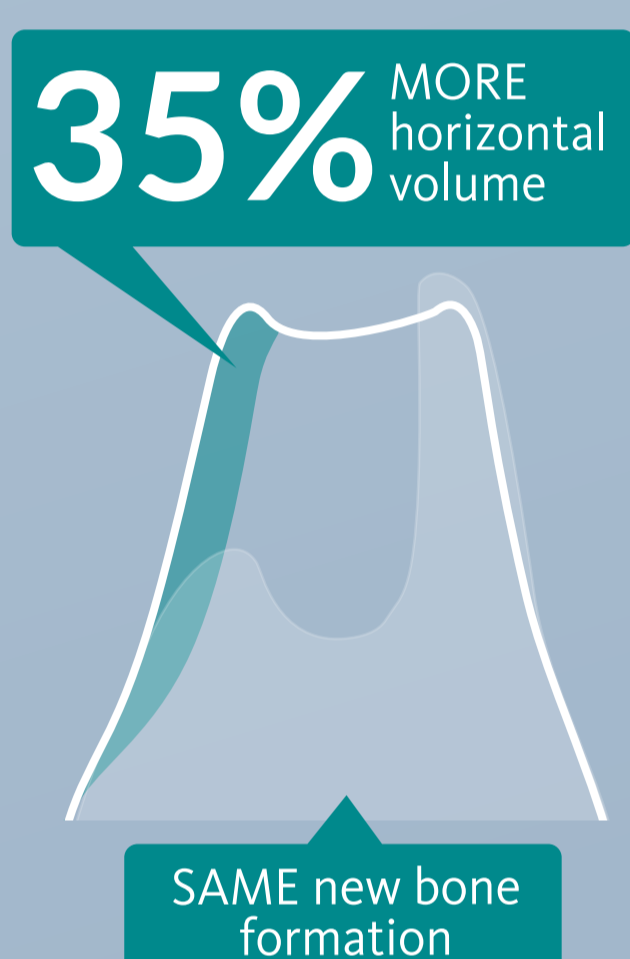
Ridge dimensions recorded at

6

months



VS



SOFT-TISSUE HEALING

Measured at

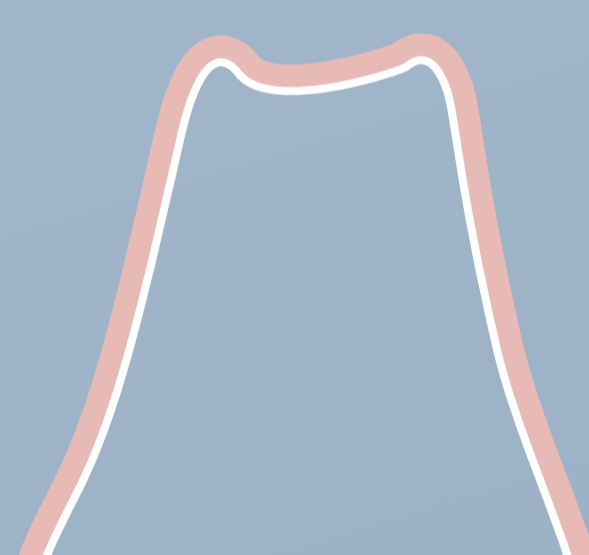
1

week



Higher inflammation on average

VS

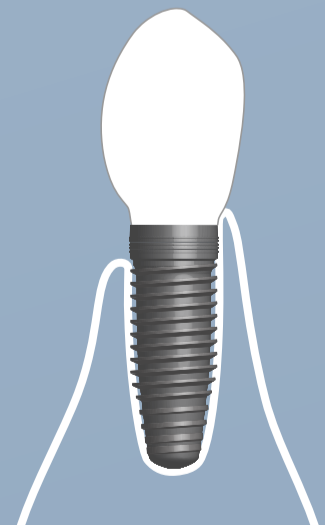
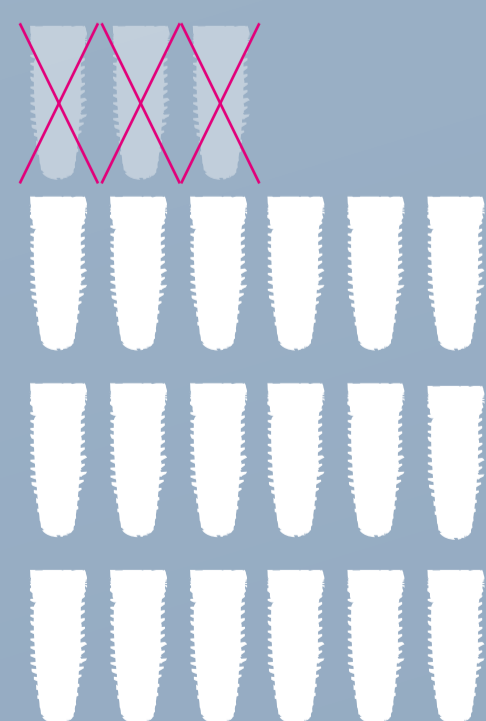


Better soft-tissue healing at one week correlates with better ridge preservation

IMPLANT PLACEMENT

18/21

implants



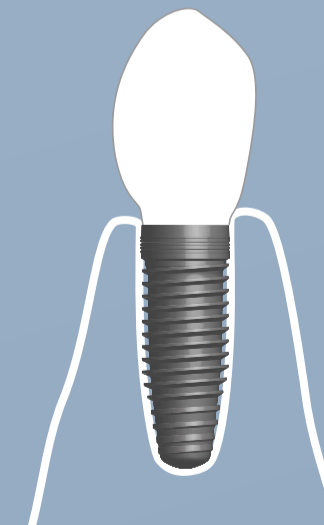
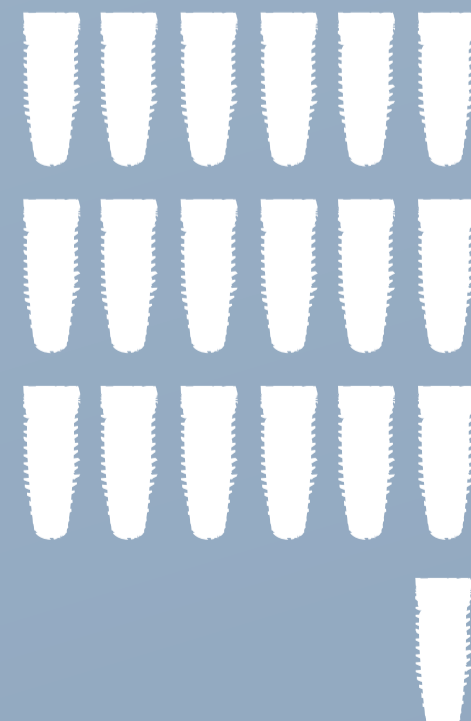
14%

of the implants could NOT be placed without 2nd regrafting at implant placement

VS

19/19

implants



100%

All implants could be placed without regrafting at implant placement

1 Oragraft[®]: demineralized allograft (DFDBA)

2 Biomend[®] Extend : reconstituted and cross-linked collagen membrane (RECXC)

3 Geistlich Bio-Oss[®] Collagen: deproteinized bovine bone mineral with collagen (DBBMC)

4 Geistlich Bio-Gide[®]: natural, bilayer collagen membrane (NBCM)